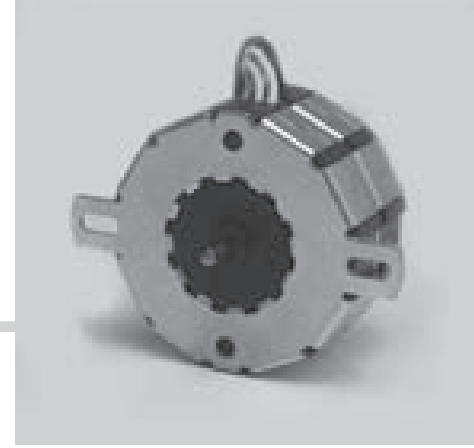


Motor Series MTS4a

Stepper Motor 7.5°



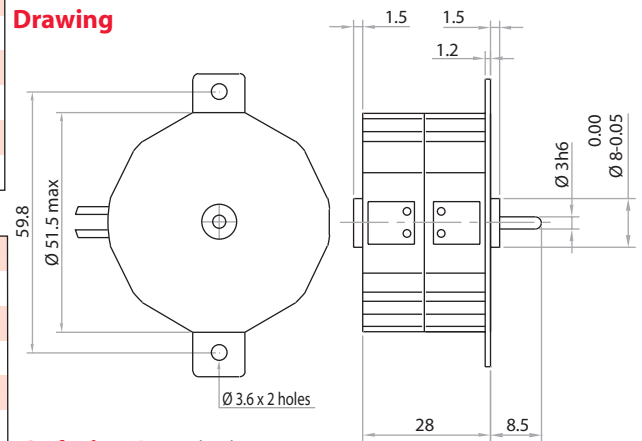
Standard Data

Motor type		Permanent Magnet (PM) stepper motor
Electrical Enclosure	IP 40	
Connections		Flexible Leads 22 AWG, 200mm length; ends stripped
Life expectancy		3 years in continuous operation
Weight	g	200
Mounting		Any position by ears or screw clip

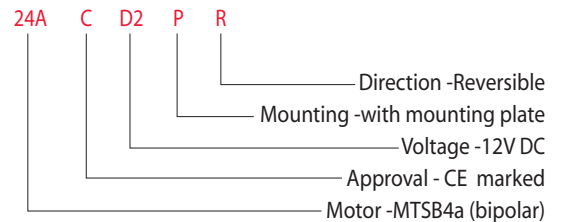
Technical Data

Steps per revolution		48		
Degree/step		7.5		
Winding Type		bipolar		
Standard Voltage	V	6	12	24
Resistance per winding	Ω	9.5	61	251
Winding Type		unipolar		
Standard Voltage	V	6	12	24
Resistance per winding	Ω	15	61	251
Winding temperature	$^{\circ}\text{C}$	105 max.		
Holding torque	N-cm	5	(MTSB4a)	3.6 (MTSU4a)
Axial Force	N	3		
Lateral Force	N	6		
Rotor inertia	g-cm ²	6		

Drawing

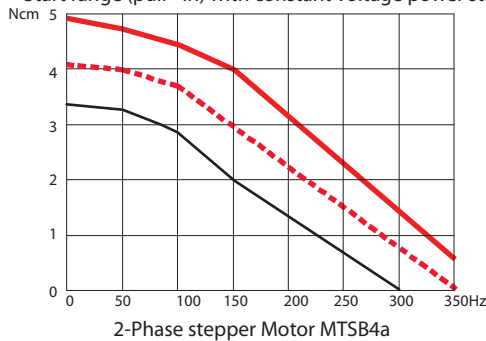


Ordering Data (eg.)

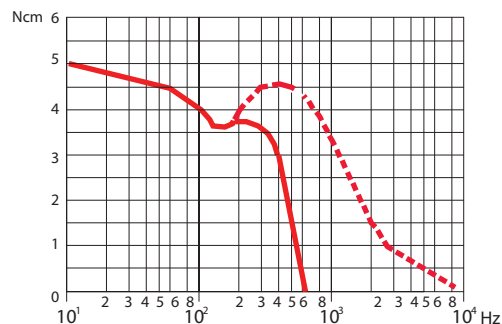
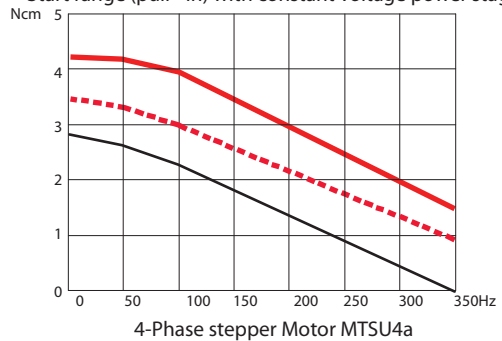


Torque Graphs

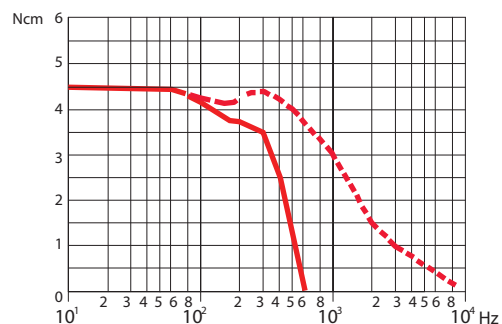
Start range (pull - in) with constant voltage power stage



Start range (pull - in) with constant voltage power stage



Slew range (pull-out) and start range (pull-in) with constant current power stage (chopper Drive)



Slew range (pull-out) and start range (pull-in) with constant current power stage (chopper Drive)