

# Motor Series **MTS3b**

## Stepper Motor 15°



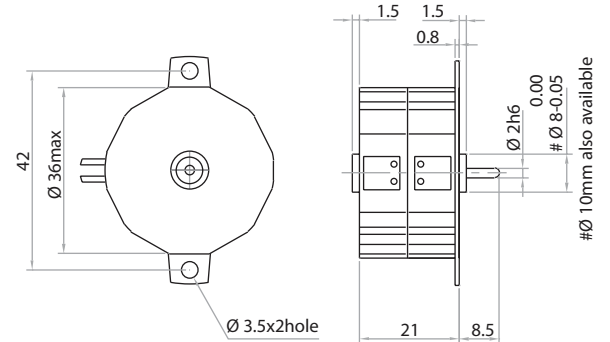
### Standard Data

Motor type		Permanent Magnet (PM) stepper motor
Electrical Enclosure	IP	40
Connections		Flexible Leads 26 AWG, 200mm length; ends stripped
Life expectancy		3 years in continuous operation
Weight	g	65
Mounting		Any position by ears or screw clip

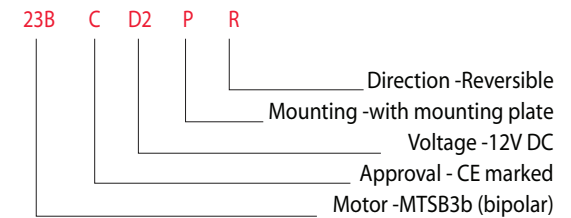
### Technical Data

Steps per revolution		48			
Degree/step		1.5			
Winding Type		bipolar			
Standard Voltage	V	3	6	12	24
Resistance per winding	$\Omega$	11.5	18.5	100	460
Winding Type		unipolar			
Standard Voltage	V	3	6	12	24
Resistance per winding	$\Omega$	12	28.5	120	500
Winding temperature	$^{\circ}\text{C}$	105 max.			
Holding torque	N-cm	1.2	(MTSB3b)	1	(MTSU3b)
Axial Force	N	1			
Lateral Force	N	3			
Rotor inertia	g-cm <sup>2</sup>	2.9			

### Drawing

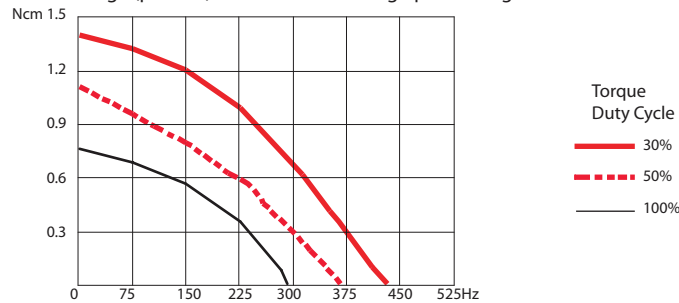


### Ordering Data (eg.)

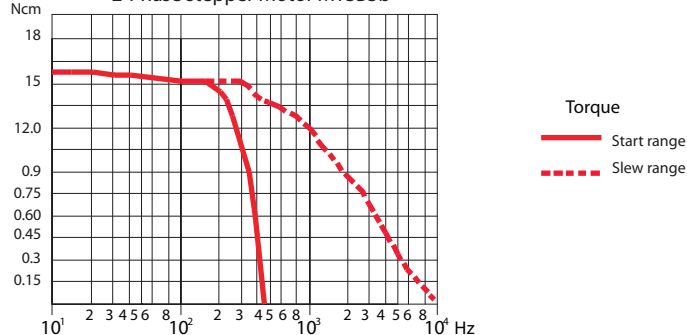


### Torque Graphs

Start range (pull - in) with constant voltage power stage

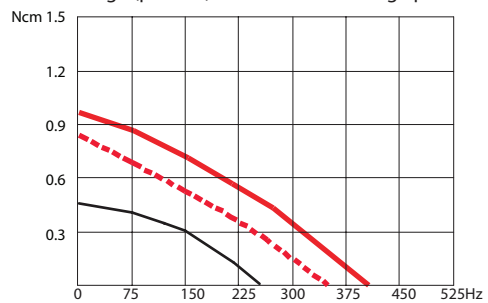


2-Phase stepper Motor MTSB3b

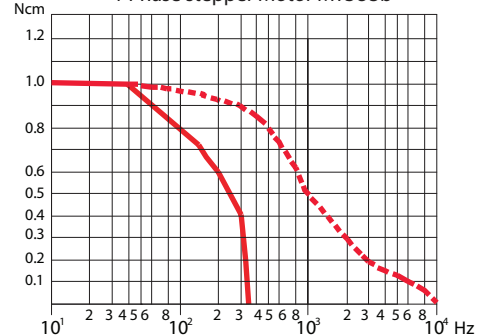


Slew range (pull-out) and start range (pull-in) with constant current power stage (chopper Drive)

Start range (pull - in) with constant voltage power stage



4-Phase stepper Motor MTSU3b



Slew range (pull-out) and start range (pull-in) with constant current power stage (chopper Drive)