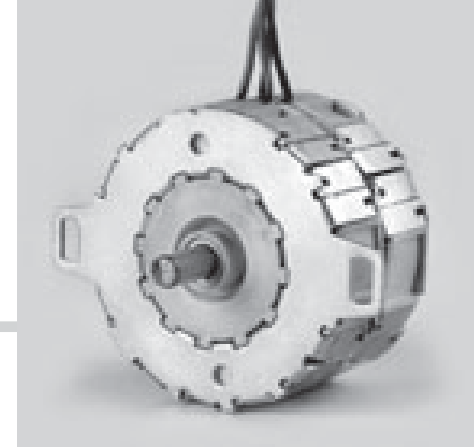


# Motor Series MTR7a



## Reversible Synchronous Motor - 250 RPM

### Application

Reversible power drive for actuators, pumps, label printing machines, medical and optical equipment, office machines, automatic vending machines, machine automation

### Design

The MTR7a reversing synchronous motor with permanent magnet rotor is electrically reversible and due to its unique stator design it is moderately priced. The rotating field is produced with a phase-shift capacitor and double-stator with coils thus ensuring extremely quiet running. Long life is guaranteed by the robust sintered bronze bearings. The MTR7a is operated with single-phase AC current.

The same motor version can be used at 50Hz and 60Hz.

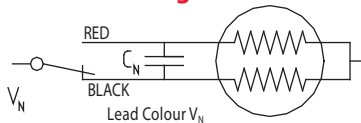
### Standard Data

Motor type		Reversible synchronous
Ambient temperature operation	°C	-15...+55
Ambient temperature storage	°C	-20...+100
Thermal class	°C	105
Electrical Enclosure	IP	40
Connections		Flexible Leads 22 AWG, 200mm length; ends stripped
Sense of rotation		Indicated by lead colour (red-CW & black ACW)
Life expectancy		3 Years in continuous operation
Mounting		any position
HVT		2.0 KV (motor voltage > 40V) or 0.6 KV (motor voltage < 40V) for 1 min.
Weight	g	300
Rotor stalling		Motor can be stopped when voltage is applied, without being overheated
Rotor shaft		Hardened steel, ground and polished
Bearings		Sintered bronze, self-lubricating
External dimensions		dia. 59 x 35 mm

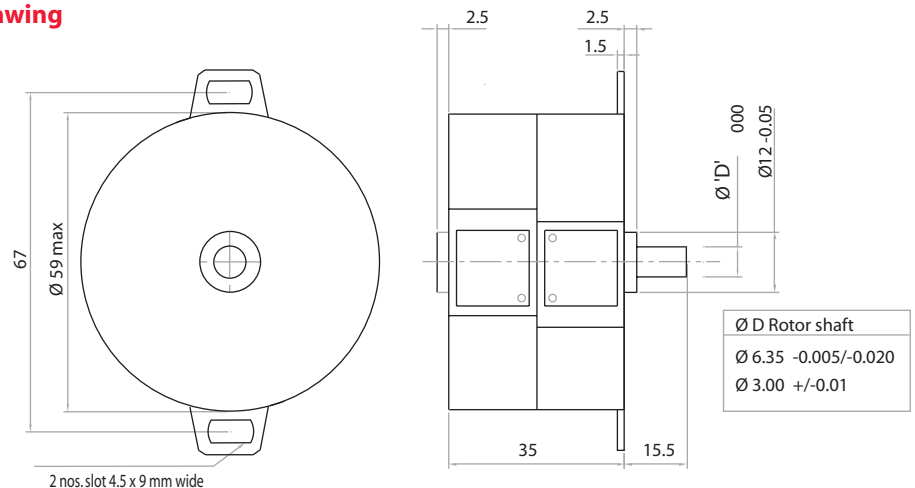
### Technical data

Standard Motor voltage $V_N$	V	12	24	48	110	220	240
Operation capacitor (50/60 Hz) $C_N$	$\mu\text{F/VAC}$	56/40	15/50	3.9/100	0.68/250	0.18/400	0.18/400
Operation capacitor (50/60 Hz) $C_N$	$\mu\text{F/VAC}$	39/40	10/50	2.7/100	0.47/250	0.12/400	0.12/400
Lead colour ( $V_N$ )		Grey	Blue	Brown	White	Yellow	Yellow
Tolerance of voltage	%	-10... +15% of rated voltage					
Duty cycle	%	100					
<b>Rated frequency</b>	<b>Hz</b>					<b>50</b>	<b>60</b>
Power output at rated voltage	W					2.2	2.1
Speed	rpm					250	300
Running torque at rated voltage	N-cm					6	4.5
Power consumption at rated voltage	W					5.8	5
Detent torque	N-cm	1.3					

### Connection Diagram



### Motor Drawing



### Ordering Data (eg.)

