

# Motor Series **MTR5**

## Reversible Synchronous Motor - 500 RPM



### Application

Recorders, Instrumentation, Diamond machinery, Valve Actuators, Light displays, Textile machinery, Medical equipment, Air conditioning & refrigeration, Dampers, Peristaltic Pumps, Dosing Pumps, Vending machines CCTV Camera positioning, any timing and positioning Application.

### Design

MTR5 reversing synchronous motor is of the permanent magnet type with two stator windings, for single phase AC 50/60 Hz. Phase displacement of the excitation current is achieved by connecting a capacitor in series with one of the stator windings. The sense of rotation is determined by the resulting circular rotating field. Electrical reversal of the sense of rotation is effected by means of a single-pole changeover switch. The 12 pole rotor which has a steel shaft polished to a mirror-finish rotates in sintered bronze bearings.

Motor can be provided with Mounting plate/Screw clip for fixing.

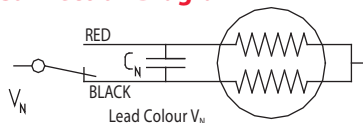
### Standard Data

Motor type		Reversible synchronous
Ambient temperature operation	°C	-15...+55
Ambient temperature storage	°C	-20...+100
Thermal class	°C	105
Electrical Enclosure	IP	40
Connections		Flexible Leads 22 AWG, 200mm length; ends stripped
Sense of rotation		Indicated by lead colour (red-CW & black ACW)
Life expectancy		3 Years in continuous operation
Mounting		any position
HVT		2.0 KV (motor voltage>40V) or 0.6 KV (motor voltage<40V) for 1 min.
Weight	g	140
Rotor stalling		Motor can be stopped when voltage is applied, without being overheated
Rotor shaft		Hardened steel, ground and polished
Bearings		Sintered bronze, self-lubricating
External dimensions		dia. 48 x 25 mm

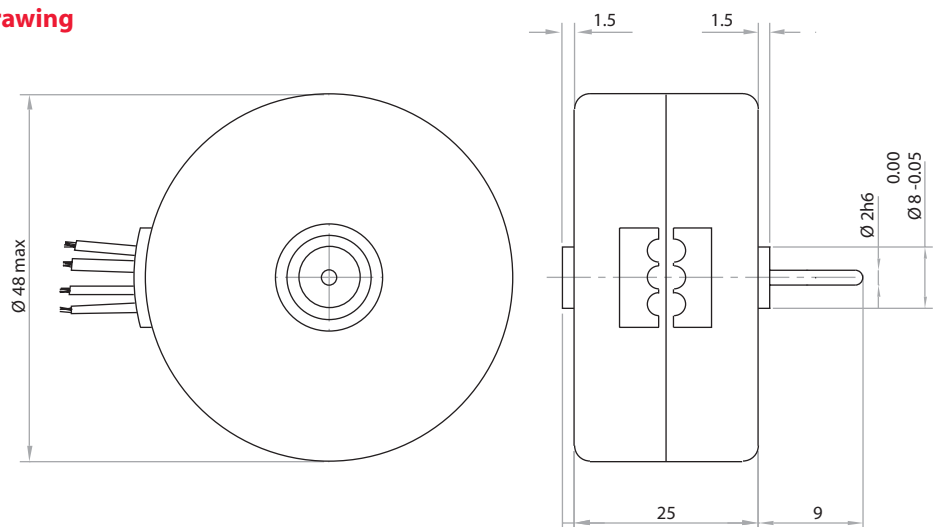
### Technical data

Rated voltage $V_N$	V	12	24	48	110	220	240
Operation capacitor (50/60 Hz) $C_N$	$\mu\text{F/VAC}$	22/20	6.8/40	1.5/100	0.27/200	0.068/400	0.068/400
Operation capacitor (50/60 Hz) $C_N$	$\mu\text{F/VAC}$	22/20	6.8/40	1.5/100	0.27/200	0.068/400	0.068/400
Lead colour ( $V_N$ )		Grey	Blue	Brown	White	Yellow	Yellow
Tolerance of voltage	%	-10... +15% of rated voltage					
Duty cycle	%	100					
<b>Rated frequency</b>	<b>Hz</b>				<b>50</b>	<b>60</b>	
Power output at rated voltage	W				0.41	0.42	
Speed	rpm				500	600	
Running torque at rated voltage	N-cm				0.8	0.75	
Power consumption at rated voltage	W				2.1	2.2	
Detent torque	N-cm	0.3					

### Connection Diagram



### Motor Drawing



### Ordering Data (eg.)

