

Gear Series GBX

Spur Reduction Gearhead - 30 Nm



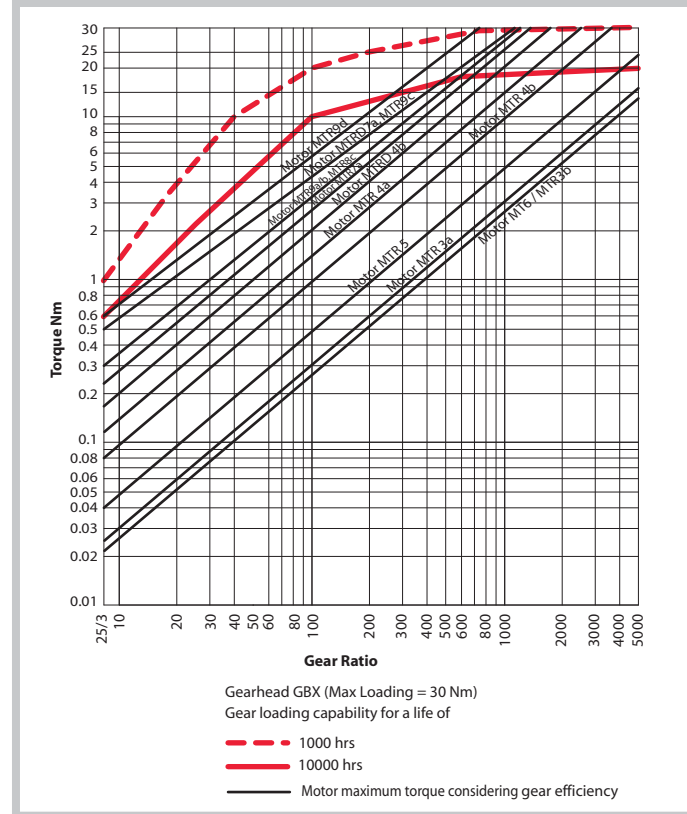
Design

Gearhead GBX contains heavily loaded steel gear wheels. The spur gears are fixed on steel spindles which are hardened and polished to a mirror finish & rotate in sintered bushings. The thick output shaft rotates in robust bronze bushings. All the gears are housed in between metal plates & closed by plastic dust cover. All bearings are permanently lubricated and therefore require no maintenance. GBX can also be combined with small to medium sizes of DC motors (up to Ø52mm). Output shaft can also be emerging from the rear side or both sides.

Standard Data

| | | |
|---------------------------------|----|--|
| Gear Type | | Spur Reduction |
| Gear Torque | Nm | 30 |
| Combination with Mechtex motors | | MT0, MT6, MTR/S5, MTR/S-4a/b, MTR/SD-4b, MTR/SD4b-RE & DC motors (Up to dia 52) MTR/S 7a, MTR/S 8c, MTR9a,b,d |
| Mounting | | any position |
| Weight | g | 850 |
| Axial thrust | N | 600 |
| Lateral force | N | 900 |
| Radial torque | Nm | 12 |
| Output bearing | | Sintered Bronze |
| Output shafts | Ø | dia.15 x 20 mm (with a flat), others on request |
| Ambient temperature operation | °C | -15...+ 55 |
| Enclosure | IP | 30 |

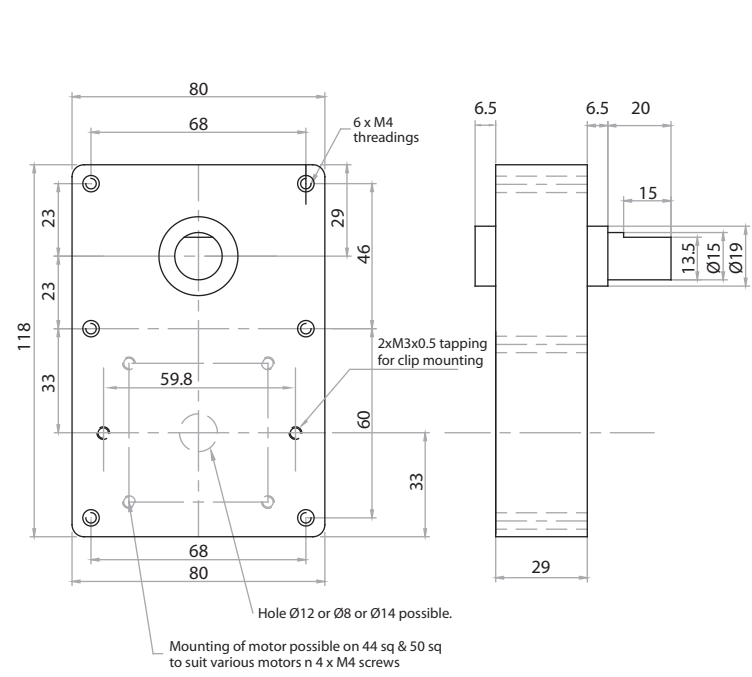
Torque/Transmission Ratio/Life Graph



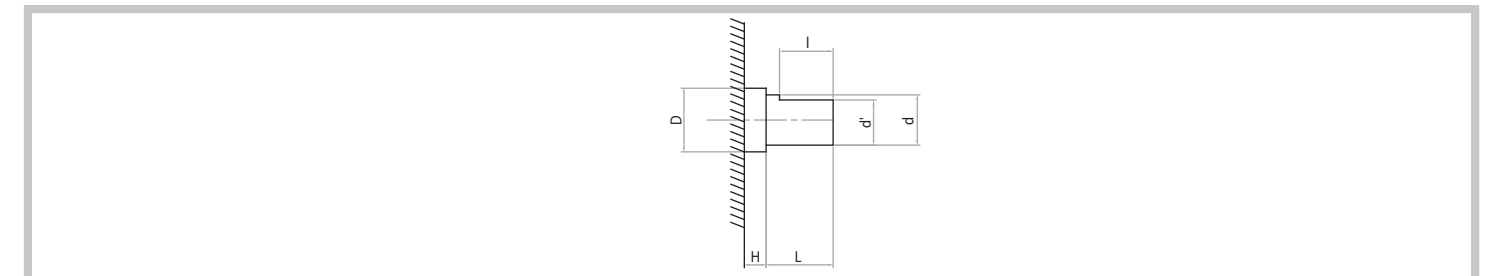
Transmission ratios

For Transmission Ratios refer to page nos. 6 & 7.

Dimensional Drawing



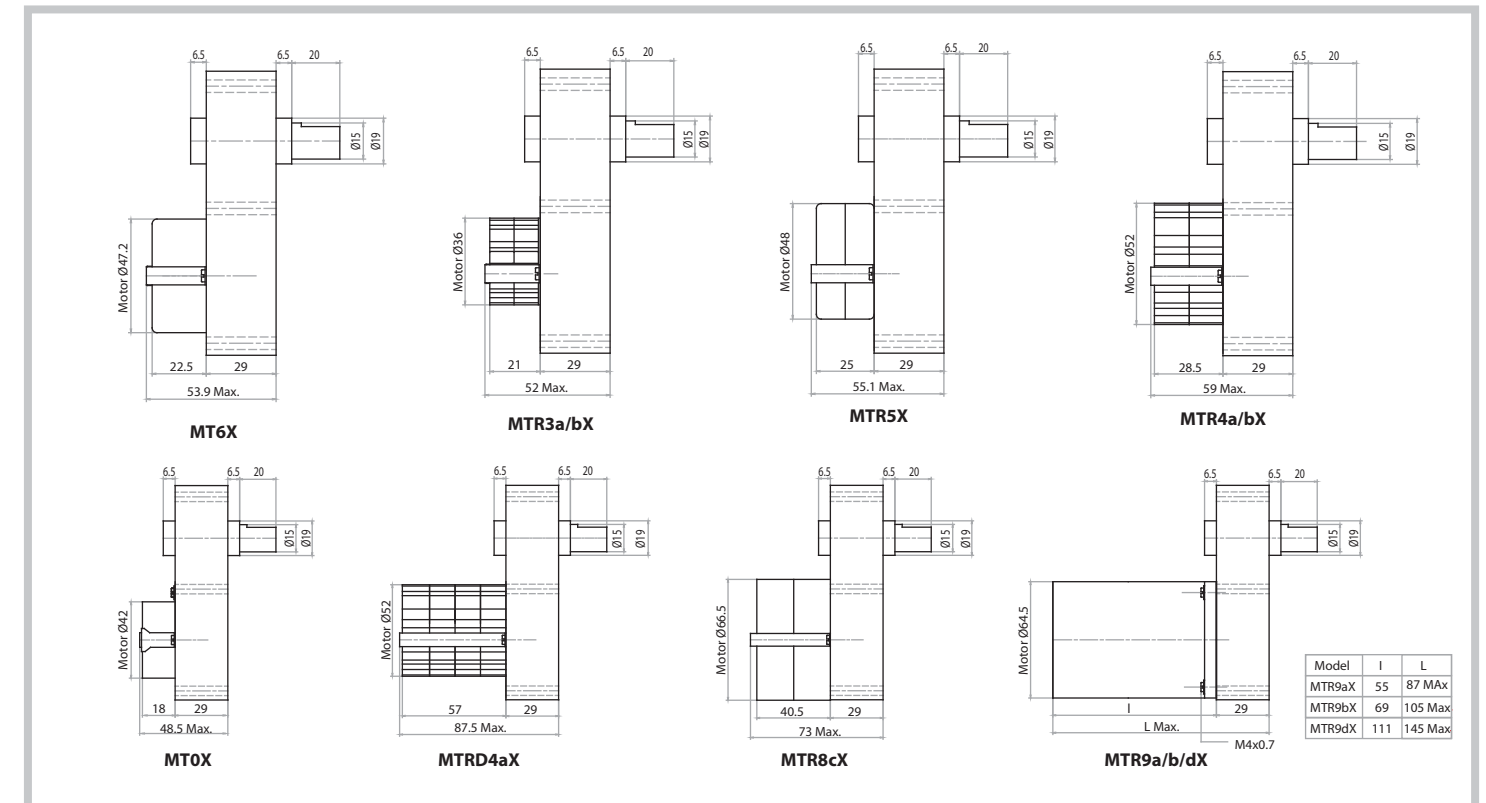
Shaft Drawings



Shaft Type Catalogue

| Shaft type | D | H | d (dia) | L | l | d' |
|------------|----|-----|---------|----|----|------|
| S | 19 | 6.5 | 15 | 20 | 15 | 13.5 |
| A | 19 | 6.5 | 15 | 40 | 35 | 13.5 |

Drawings



Photographs

