



Gear Series **GB2**



Spur Reduction Gearhead - 3 Kg-cm

Design

In GB2 gearhead, spur gears rotate on hardened steel spindles which are polished to a mirror finish. In order to damp running noise at slow running times and low motor loads, the initial spur gears after the rotor shaft are made of injection moulded poly acetal. The spur gears close to the output shaft on the other hand, are made of metal. The output shaft is mounted in two special brass bushes. The entire gear train is put between metal plates with a plastic frame. It is permanently lubricated and therefore requires no maintenance. Thicker shafts (\varnothing 6-7mm) mounted in robust bushings (\varnothing 12) are available in a new variant (GB2S). Single-way or two way slipping clutches can also be installed to enable the output shaft to be rotated while the motor is stationary. GB2 can also be combined with small DC Motors. To achieve higher gear torque, GB2 can be mounted on GB4. Linear drives also possible with small sized motors ($\varnothing < 36$ mm).

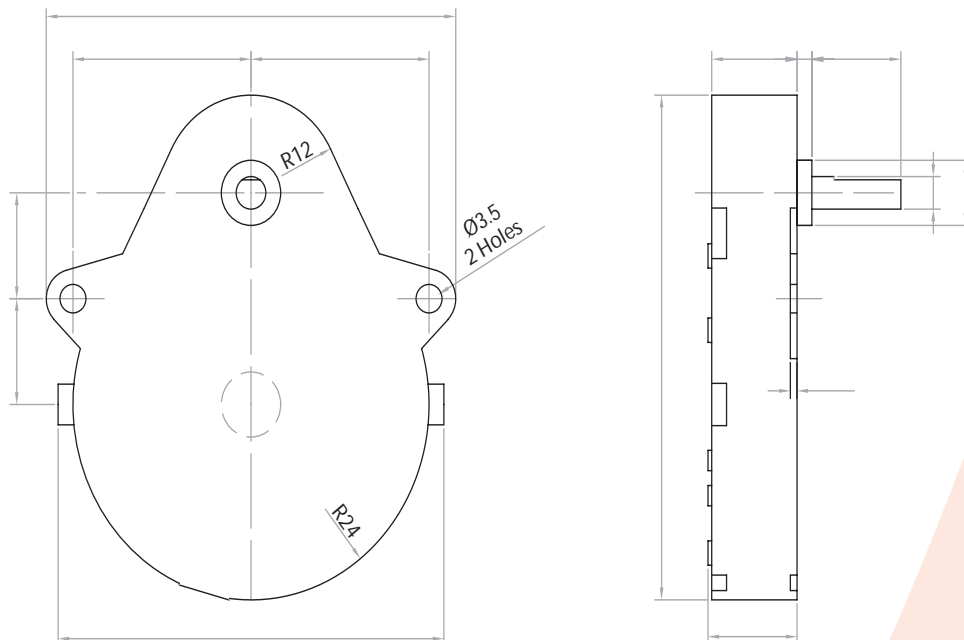
Standard Data

Gear Torque	kg-cm	3
Combination with Mechtex motors		Motor MT0, MT6, MTR3a/3b, MTR/S-5 and small DC motors
Mounting		any position
Weight	gm	60
Axial thrust	kg	2
Radial torque	kg	5
Lateral torque	kg-cm	5
Slipping clutches / free wheel		Single left/right
Slipping clutches / friction	kg-cm	0,5 ... 4.0
Output shafts	\varnothing	3.175, 4.00, 4.76, 5.00, 6.00, 6.35 & 7.00 (others on request)
Ambient temperature operation	$^{\circ}$ C	-15 ... +55

Transmission ratios

25/6	5	25/3	10	25/2	15	50/3	125/6	25	30	125/4	100/3	75/2
125/3	45	50	60	125/2	75	250/3	100	125/2	120	125	135	1125/8
150	500/3	375/2	200	250	2500/9	300	375	1250/3	450	500	600	625
750	900	1875/2	1000	1125	1200	1250	1500	1800	1875	2250	2500	3000
3600	3750	4500	5000	5400	other ratios & higher transmission ratio also available							

Dimensional Drawing

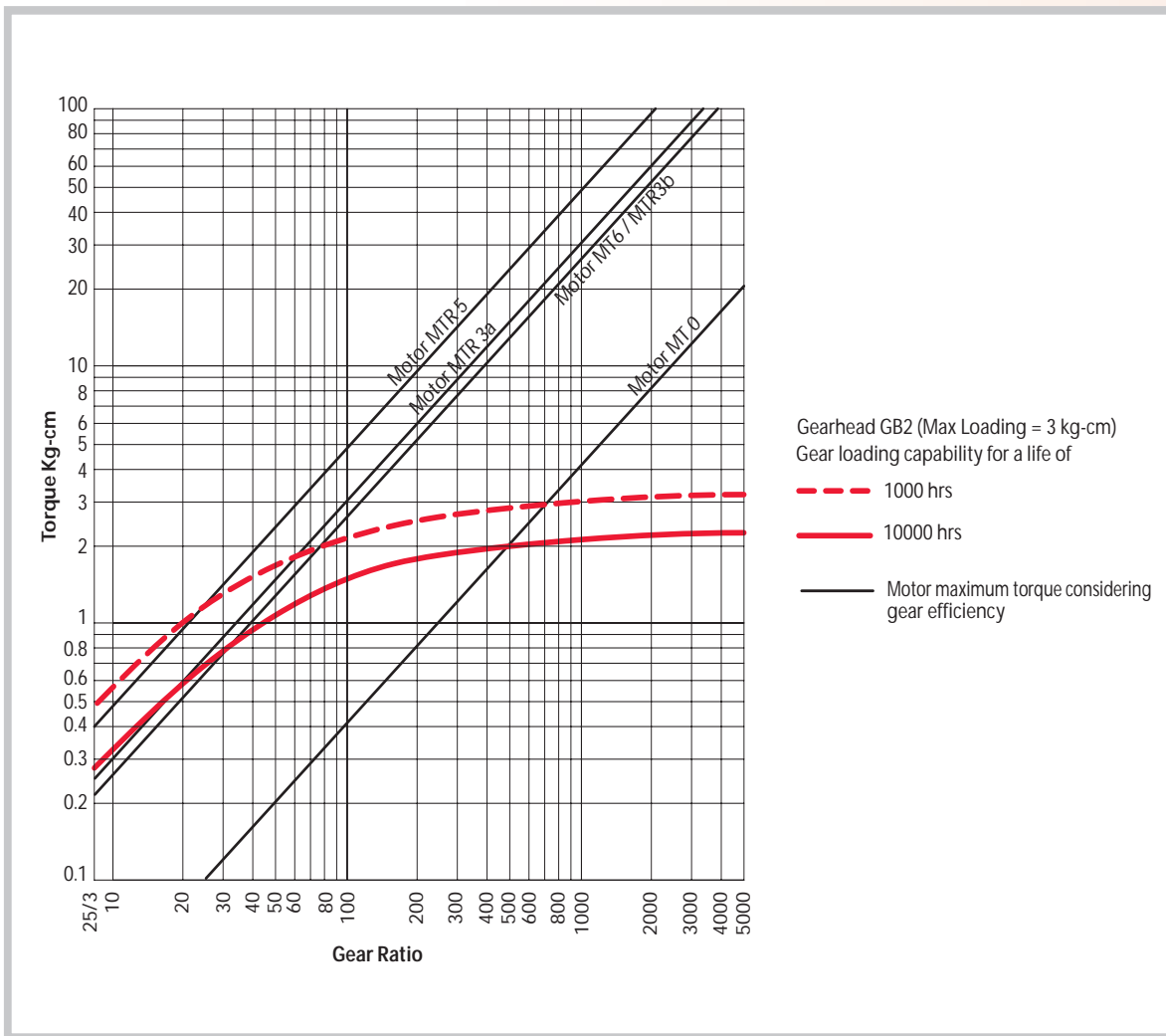




Gear Series GB2

Spur Reduction Gearhead - 3 Kg-cm

Torque/Transmission ratio/life Graph



Drawings

